

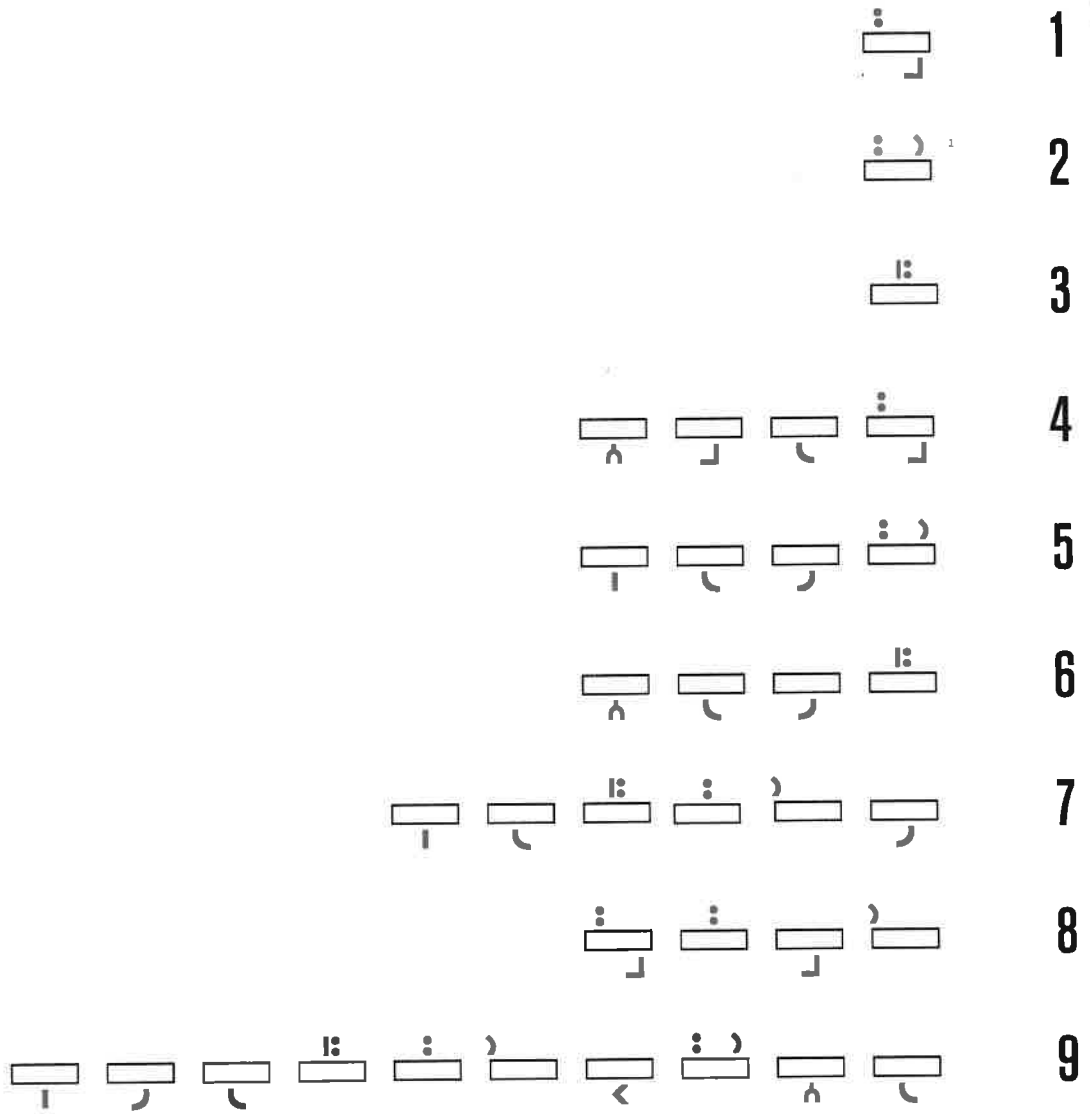
□ (תִּיב) is a substitute for □.

Any □ will change to □ when the following two conditions are met:

- The accent of the □ word falls on the first syllable,
- AND
- no *mehabber* precedes the □.

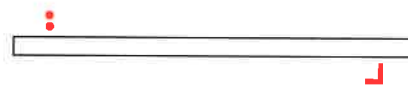
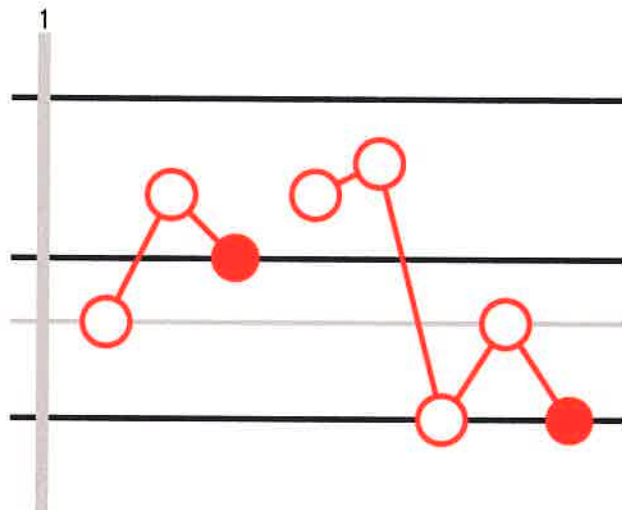
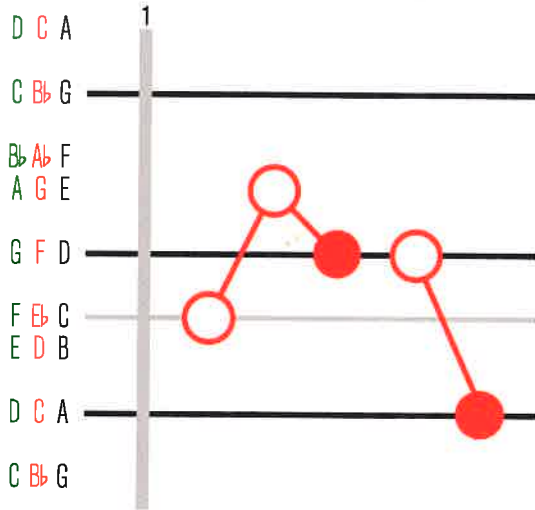
The word תִּיב actually could never hold a □ because it is not accented on the first syllable.

To practice the real sound of this *ta'am*, omit the first syllable and sing תִּיב ("tiv").

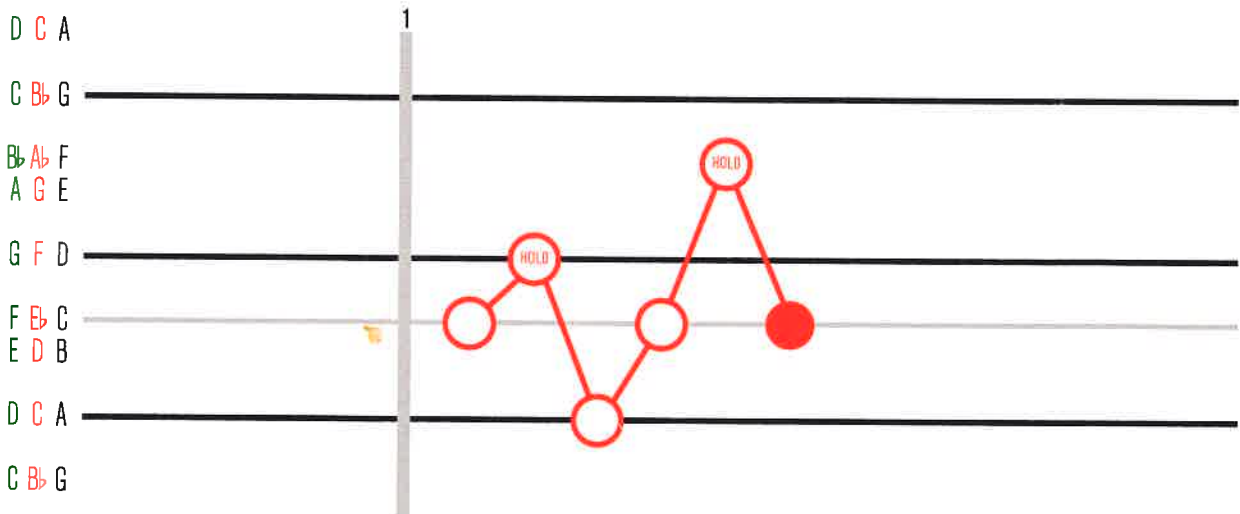




One-Word Phrases



קדמָא - זקף־קטן ← common name
 מתיגָה - זקף־קטן ← technical name

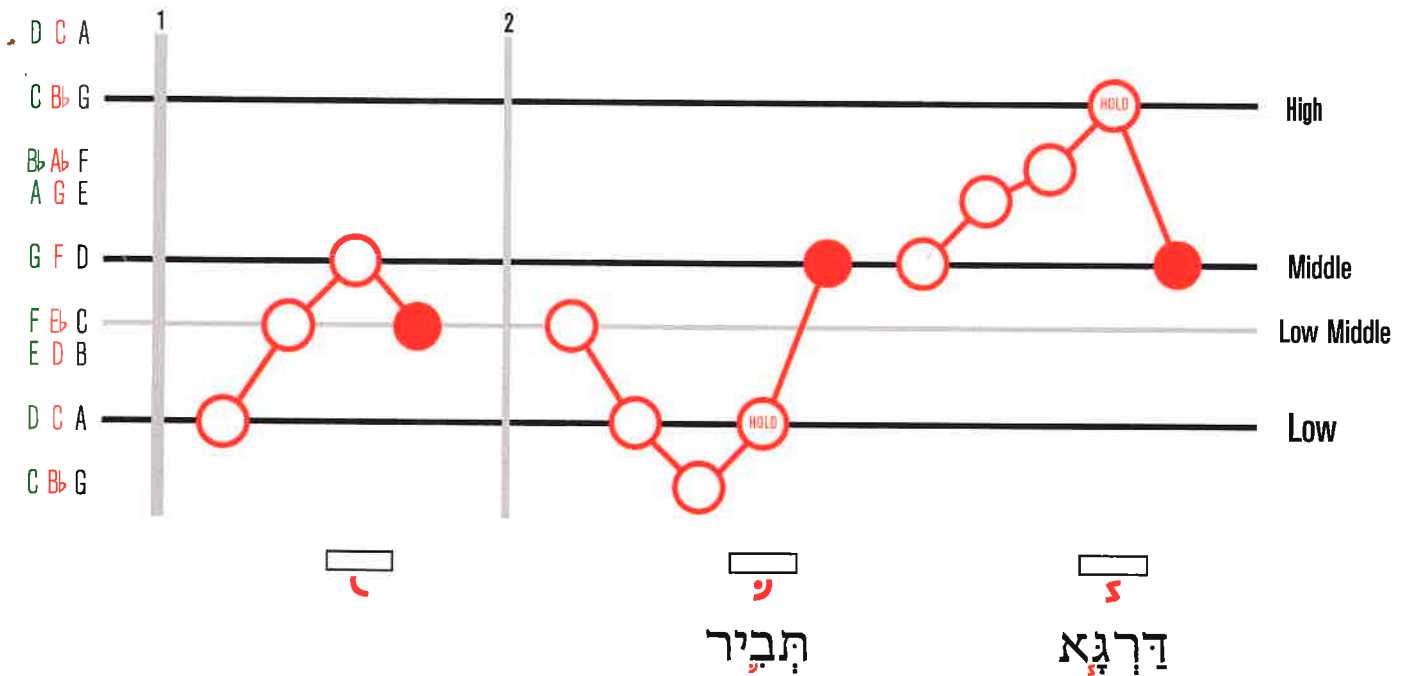
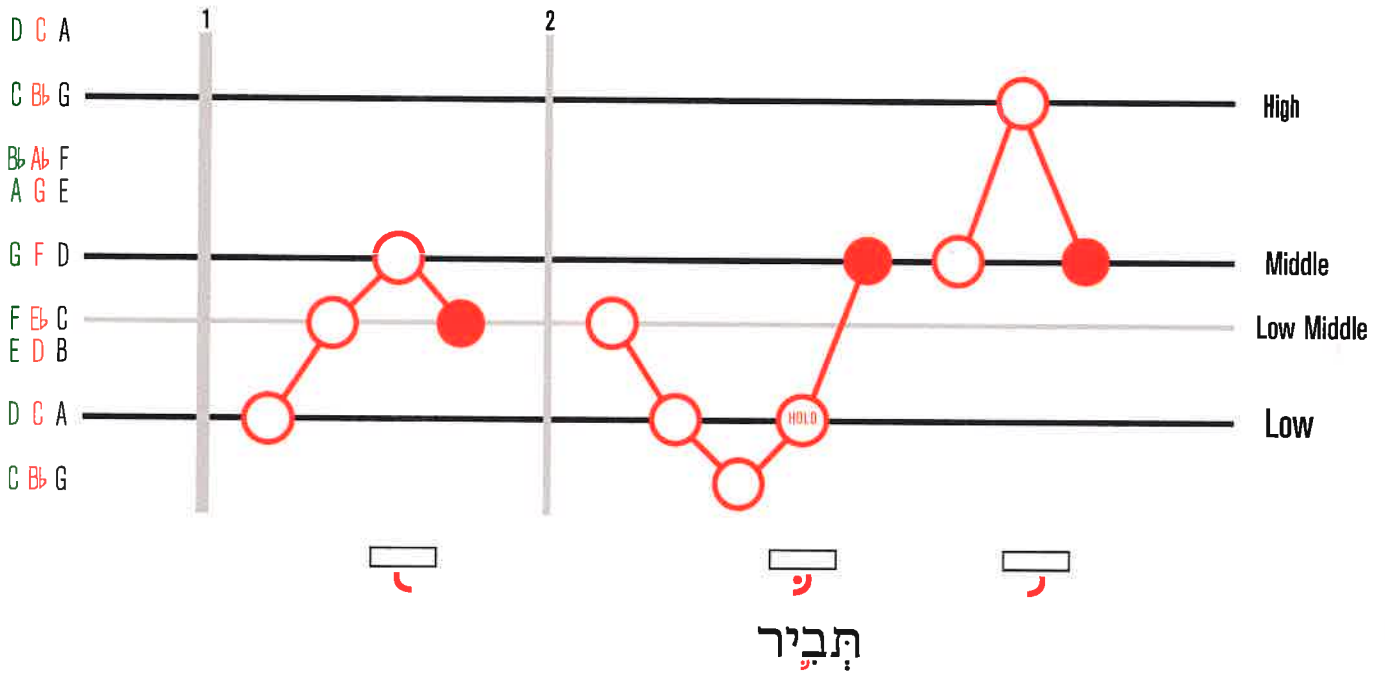


זקף־גדול

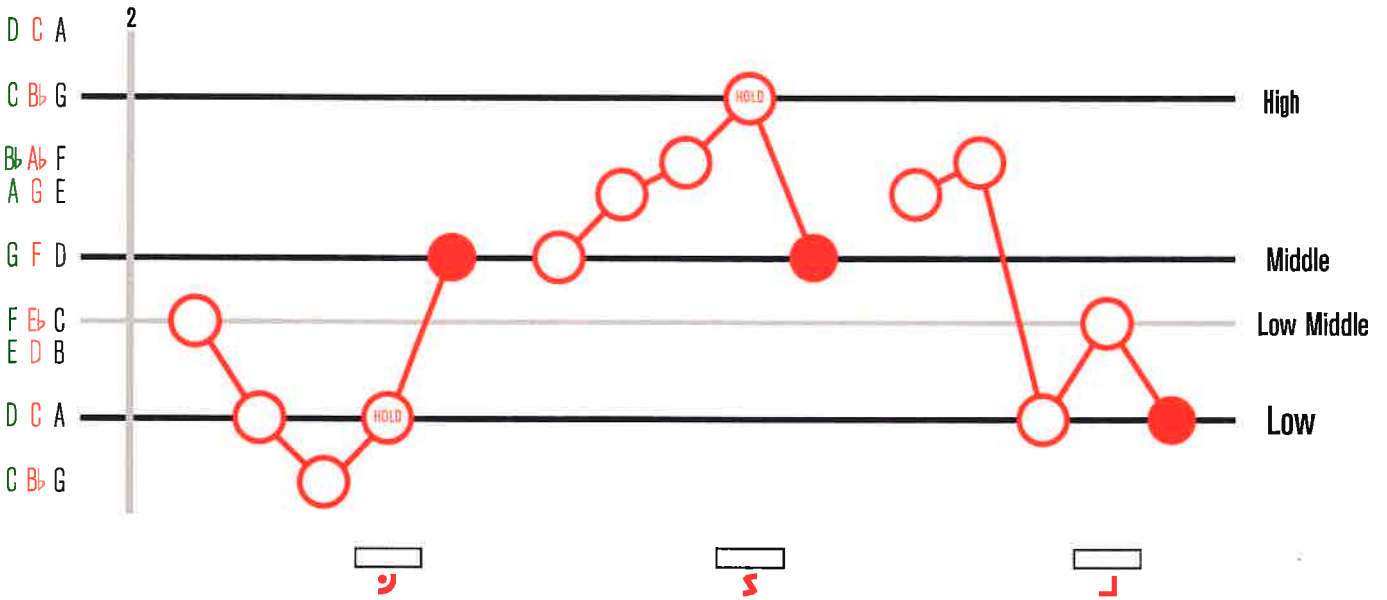
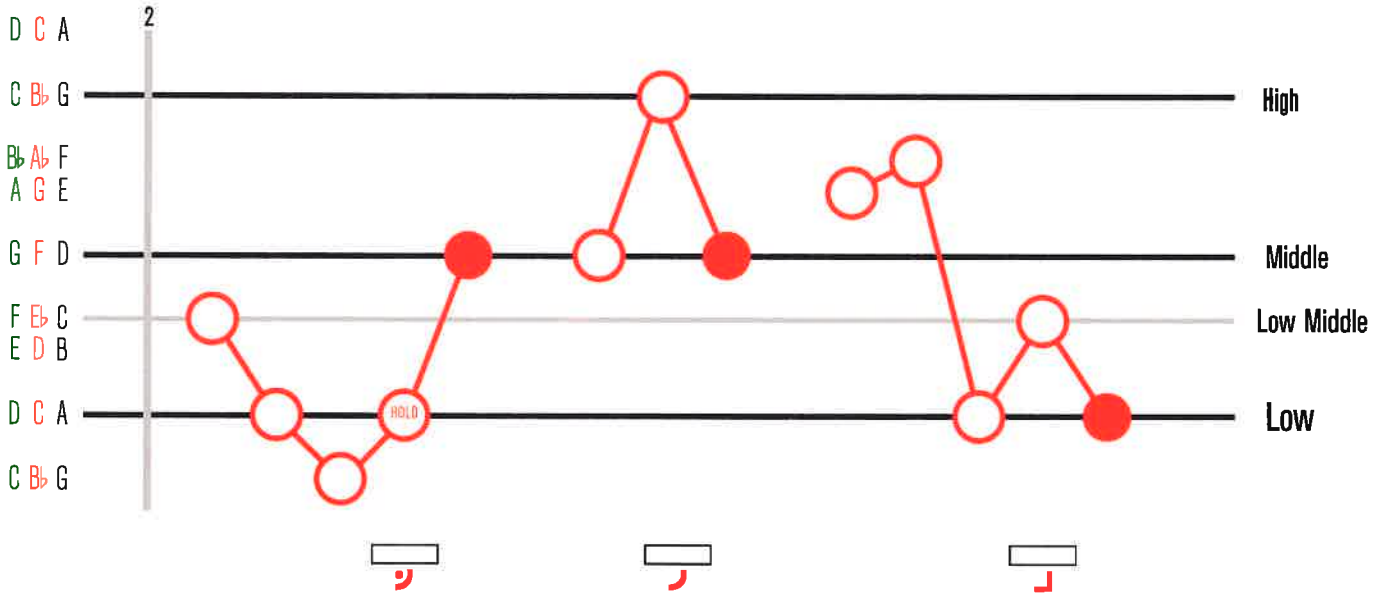
										1
										2
										3
										4
										5
										6
										7
										8
										9



הפטרה

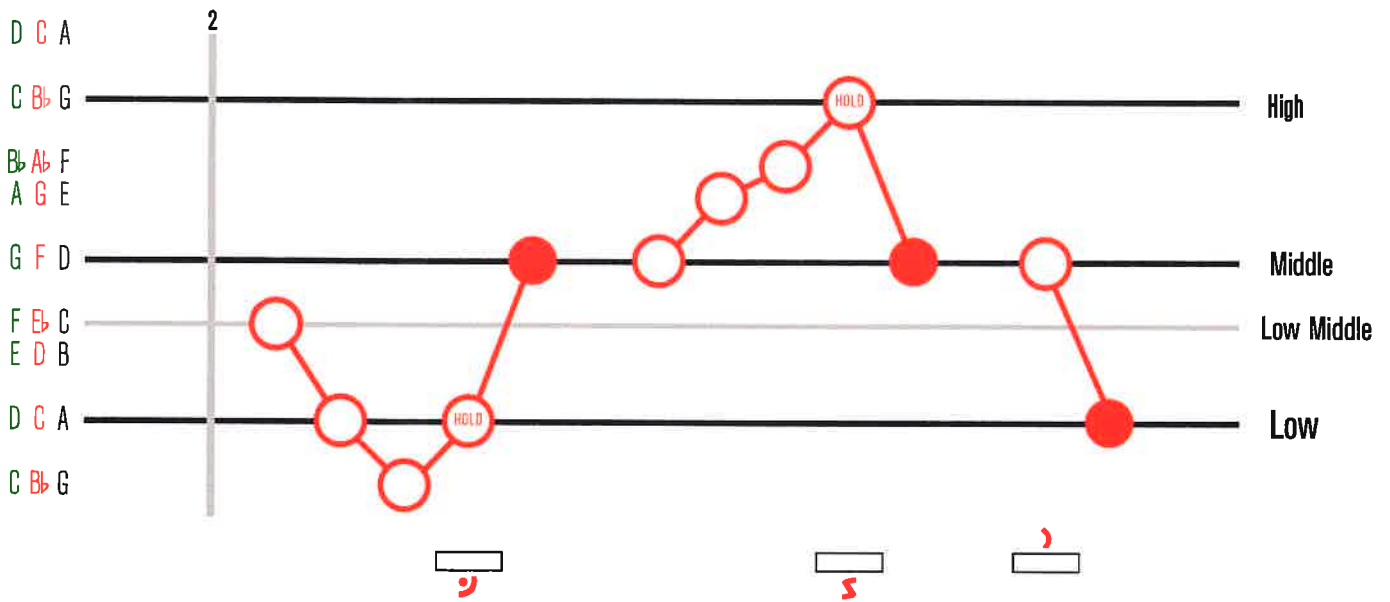
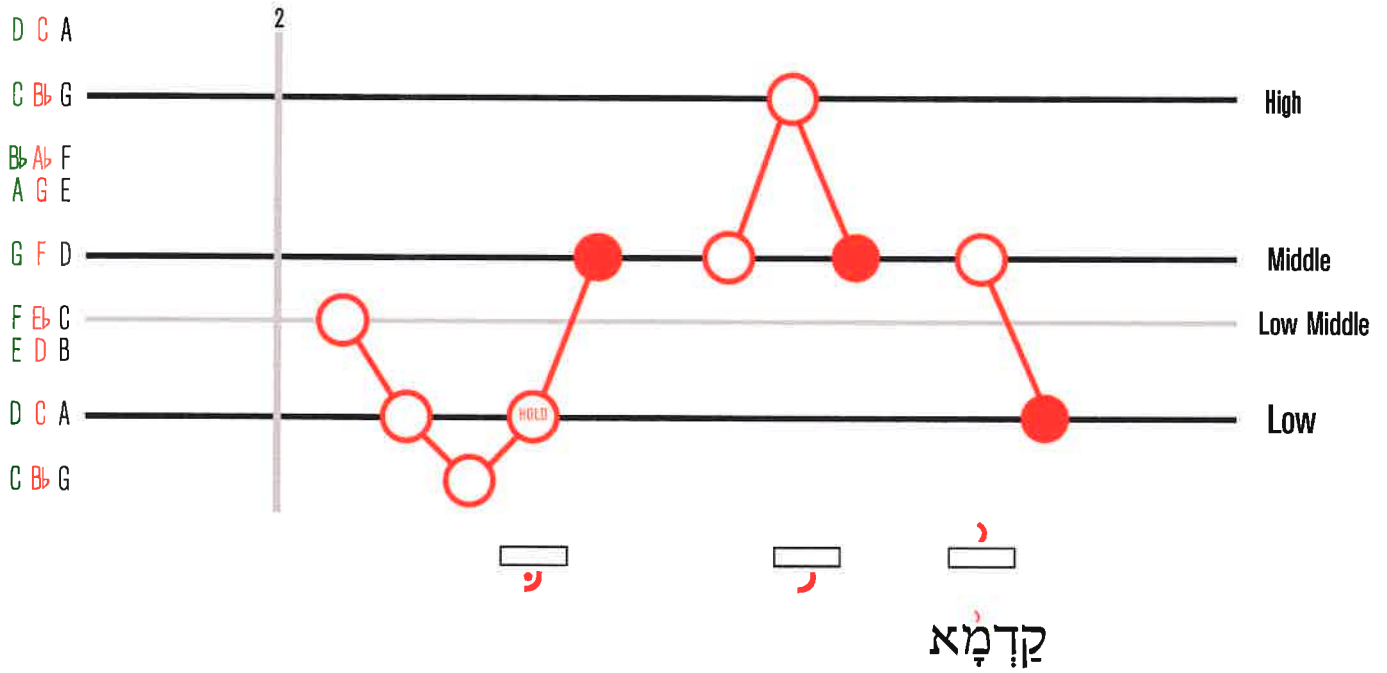


										1
										2
										3
										4
										5
										6
										7



דָּרְגָא

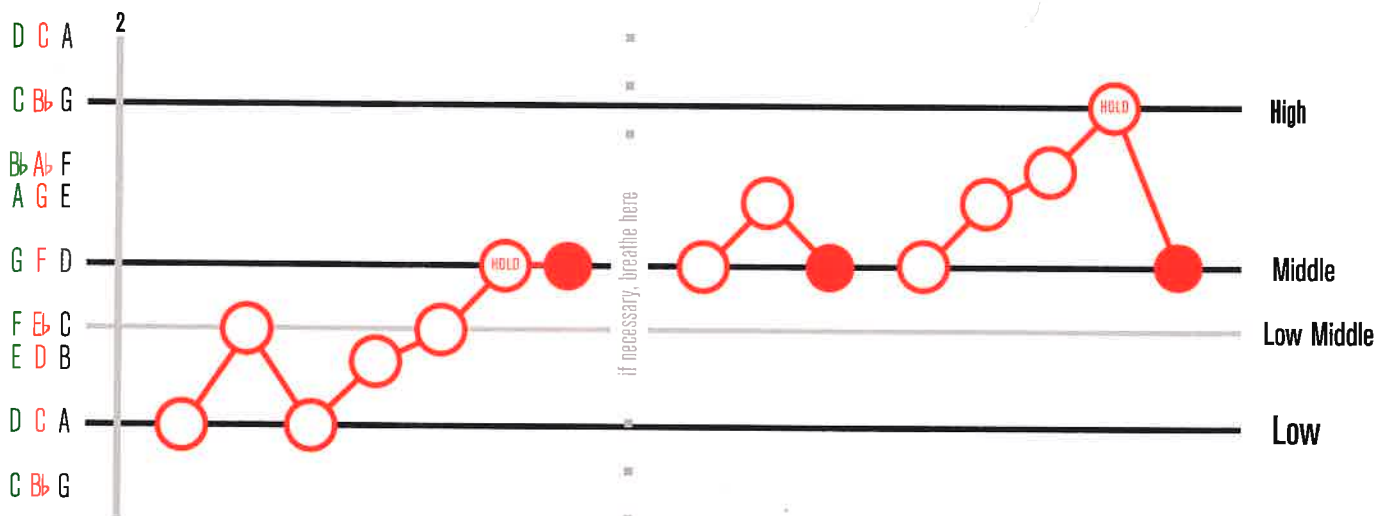
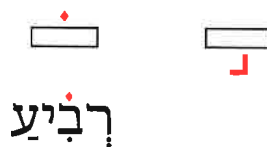
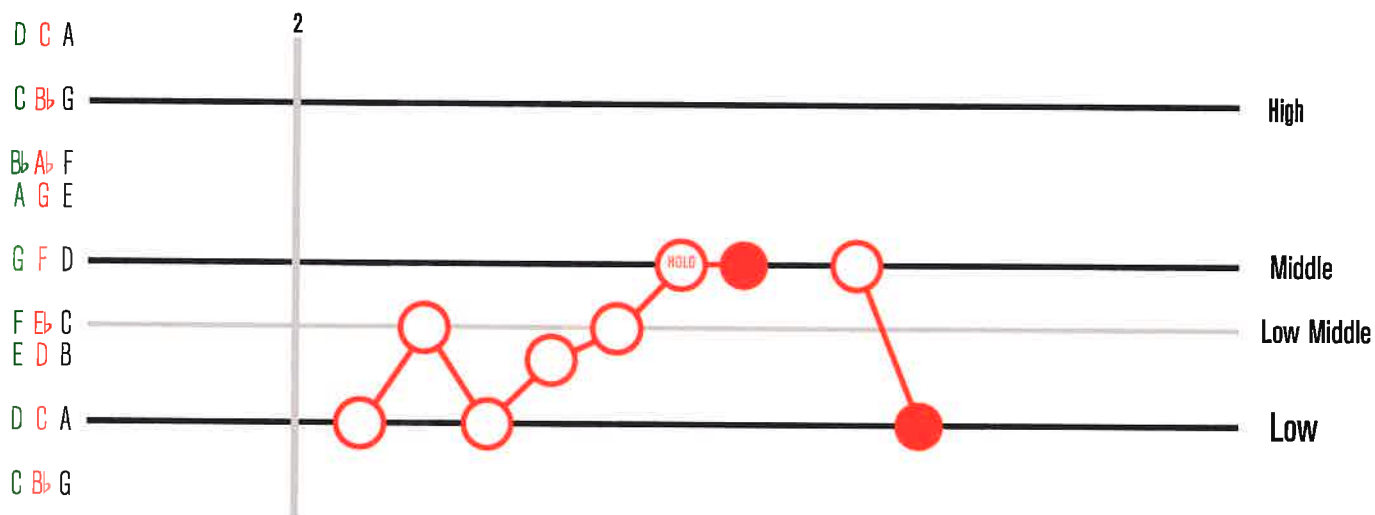
										1
										2
										3
										4
										5
										6
										7



					◌̇	1
				◌̇	◌̇	2
		◌̇	◌̇	◌̇	◌̇	3
	◌̇	◌̇	◌̇	◌̇	◌̇	4
	◌̇	◌̇	◌̇	◌̇	◌̇	5
	◌̇	◌̇	◌̇	◌̇	◌̇	6
◌̇	◌̇	◌̇	◌̇	◌̇	◌̇	7
◌̇	◌̇	◌̇	◌̇	◌̇	◌̇	8



הפטרה



					◌̇	◌̇		◌̇		1	
				◌̇	◌̇	◌̇	◌̇		◌̇	2	
	◌̇	◌̇	◌̇	◌̇	◌̇	◌̇		◌̇		3	
					◌̇	◌̇		◌̇	◌̇	4	
					◌̇	◌̇		◌̇		◌̇	5
						◌̇		◌̇		6	
◌̇	◌̇	◌̇	◌̇		◌̇	◌̇	◌̇	◌̇	◌̇	7	

Consider the combination $\text{◌̇} | \text{◌̇}$ to be the *ta'am* מְנַחֵם מְפַסֵּק only when it appears within a רְבִיעַ phrase.

(There are rare exceptions, but none occur in *haftarot*.)

Consider any other occurrence of $|$ to be a פְּסִיק .

פְּסִיק is not a *ta'am* (since it comes between words) and does not affect any melodies.

Rather, it signals the need for a short pause after any preceding *mehaber*.